



IVERMECTIN ELISA (5141IVER)

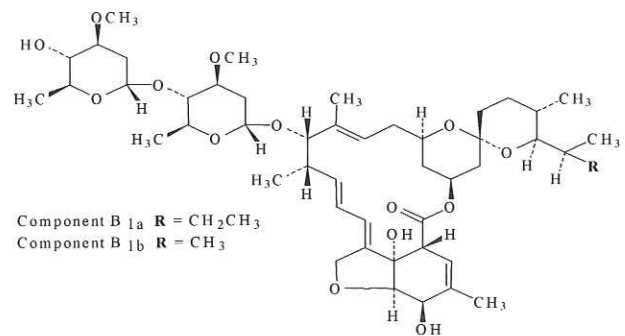
General

The Ivermectin ELISA is a unique competitive enzyme immunoassay (ELISA) for the detection of Ivermectin in urine, tissue and milk samples. The sensitivity of this ELISA is far below the maximum residue limits as fixed by the European Union: 100 ug/kg in fat and liver and 30 ug/kg in kidney.

Kit characteristics

- **Microtiter plate:**
12 x 8 break 4 wells
- **Antibody cross-reactivity:**

Ivermectin	100%
Emamectin	112%
Abamectin	60%
Eprinomectin	58%
Doramectin	9%
Milbamycin	<1%
- **Conjugate**
Ivermectin-HRP stabilized
- **Standard range (ready-to-use):**
0, 10, 25, 50, 100, 250 and 500 ng/ml)

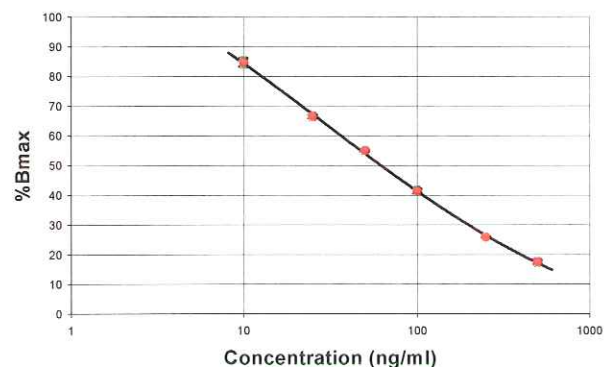


Chemical structure of ivermectin

Assay procedure

Antibody, conjugate and standard/sample are pipetted into the wells and incubated for 1 hour in the dark at 37°C. After a washing procedure ready-to-use substrate is added and incubated for 30 minutes at RT (20°C - 25°C). The reaction is stopped and the absorbance is read in a spectrophotometer at 450 nm.

Calibration Curve Ivermectin



Assay characteristics

Matrices and sample preparation,

Urine I: Organic extraction and SPE clean up	4
Urine II: TBME extraction	1
Tissue: Organic extraction and SPE clean up	3
Milk: Organic extraction and SPE clean up	5
Serum: Organic extraction and SPE clean up	1
TMBE extraction	1

LOD (ppb)

4
1
3
5
1
1

LOD(Limit of Detection); Validation according SANCO/1085/2000.

[4]11