



# MEDROXY PROGESTERONE ACETATE ELISA (5131MPA)

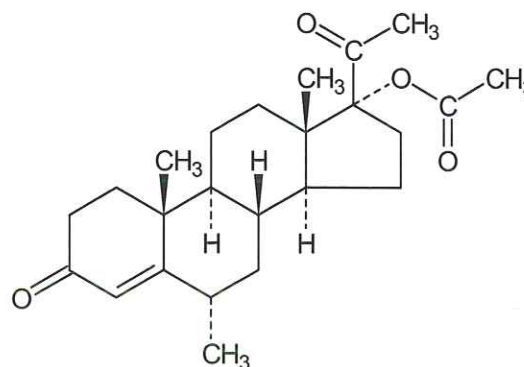
## General

Medroxy progesterone acetate (MPA) can be used as an illegal growth promoter in meat production. Due to its lipophilic characteristics MPA is concentrated in fat samples. The MPA ELISA is a competitive enzyme immunoassay (ELISA) for the detection of MPA not only in fat samples, but also in muscle, sausages and feed samples.

## Kit characteristics

- **Microtiter plate:**  
12 x 8 break 4 wells
- **Antibody cross-reactivity:**

Medroxyprogesterone acetate	100%
Megestrol acetate	50%
Chlormadinone acetate	50%
Melengestrol acetate	25%
Medroxyprogesterone	<0,1%
- **Conjugate**  
MPA-HRP stabilized
- **Standard:**  
Stock standard 40 ng/ml, lyophilised



Chemical structure of medroxyprogesterone acetate (MPA)

## Assay characteristics

**Matrices and sample preparation** LOD (ppb)\*1  
 Kidney fat: c-Hexane addition,  
 2 times SPE clean up 0.5

### Assay procedure

Antibody, conjugate and standard/sample are pipetted into the wells and incubated for 1 hour in the dark at 37°C. After a washing procedure ready to use substrate is added and incubated for 30 minutes at RT. The reaction is stopped and the absorbance is read in a spectrophotometer at 450 nm.

\*1 LOD (Limit of Detection); Validation according SANCO/1085/2000.

Calibration curve MPA

