



STREPTOMYCIN ELISA (5111STREP)

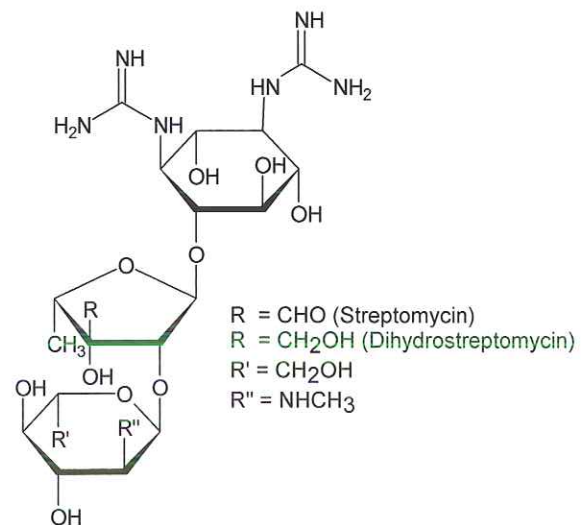
General

Streptomycin and Dihydrostreptomycin belong to a group of carbohydrate containing antibiotics called aminoglycosides. All the aminoglycosides are potentially toxic compounds causing significant damage in vestibular and auditory functions in humans as well as in animals. In combination with the gentamicin and neomycin ELISA we offer a unique panel for the detection of these three aminoglycosides in a range of matrices.

Kit characteristics

- **Microtiter plate:**
12 x 8 break 4 wells
- **Antibody cross-reactivity:**

Streptomycin	100%
Dihydrostreptomycin	100%
Neomycin	< 0.1%
Kanamycin	< 0.1%
Gentamicin	< 0.1%
Sisomicin	< 0.1%
- **Standard range (ready-to-use):**
0, 0.25, 0.5, 1.0, 2.0, 10 and 20 ng/ml
Stock standard 100 ng/ml



Chemical structure of (dihydro)streptomycin

Assay procedure

Antibody, conjugate and sample/standard are pipetted into the wells and incubated for 1 hour at 2°C - 8°C. After a washing procedure ready-to-use substrate is added and incubated for 30 minutes at RT (20°C - 25°C). Stop the reaction and read in a spectrophotometer at 450 nm.

A calculation program is available upon request.

Assay characteristics

Matrices and sample preparation,	LOD (ppb)^{*2}
Milk: defatting and dilution	4
Serum: direct after dilution in buffer	2
Tissue ^{*1} : trichloroacetic extraction	10
Egg: dilution in buffer	2
Urine: direct after dilution in buffer	4
Honey: dilution in buffer	6
Honey: Solid Phase Extraction	5
Royal Jelly: Solid Phase Extraction	5

^{*1} Tissues: meat, shrimp.

^{*2} LOD (Limit of Detection); Validation according SANCO/1085/2000.

