



# CLOSTEBOL ELISA (5081CLOS)

## General

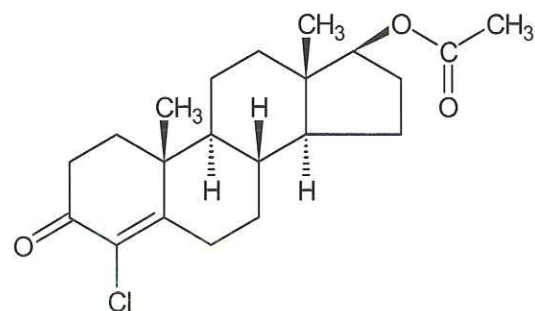
Clostebol, usually available on the market as the ester clostebol acetate, is a synthetic anabolic androgenic steroid. Besides it may be used as anabolic agent in meat production, clostebol acetate may also be used to enhance performance in racehorses. One of its main metabolite excreted via urine is 4-Chloro-androst-4-ene-3,17-dione. This compound can be detected in urine from treated horses for at least two days and therefore, it is the compound of choice for screening on misuse of clostebol.

## Kit characteristics

- **Microtiter plate:**  
12 x 8 break 4 wells
- **Antibody cross-reactivity:**

4-Chloro-androst-4-ene-3,17-dione	100%
Clostebol	28%
Clostebol acetate	120%
$\beta$ -Testosterone	< 0.1%
Methyltestosterone	< 0.1%
Nortestosterone	< 0.1%
- **Conjugate:**  
Clostebol-HRP stabilized.
- **Standard range (ready-to-use):**  
0, 0.05, 0.1, 0.3, 0.5, 1, and 2 ng/ml

Inter Assay variation: 7%  
Intra Assay variation: 5%



Chemical structure of clostebol acetate.

## Assay procedure

Antibody, conjugate and sample/standard are pipetted into the IgG pre-coated wells and incubated 30 minutes at RT (20°C - 25°C). After a washing procedure ready-to-use substrate is added and incubated for 15 minutes at RT. Stop the reaction and read in a spectrophotometer at 450 nm.

