



EuroProxima
Close to your analysis

TYLOSIN ELISA (5151TYL)

General

Tylosin is a macrolide antibiotic that is active against Gram-positive bacteria and mycoplasmas. It is used in pigs, cattle and poultry for the treatment of conditions caused by sensitive organisms. In beekeeping tylosin is used to prevent infection diseases like American foulbrood. Tylosin consists predominantly of tylosin A and varying amounts of tylosin B, tylosin C and tylosin D. In the past, tylosin has been used as a feed additive in animal feed to promote growth, but in 1998 it was banned in accordance with Council Regulation (EC) no. 2821/98.

The **Tylosin ELISA** is a competitive enzyme immunoassay based on antibodies directed against tylosin.

Kit characteristics

Microtiter plate:

96 wells
12 x 8 Breakapart

Antibody cross-reactivity:

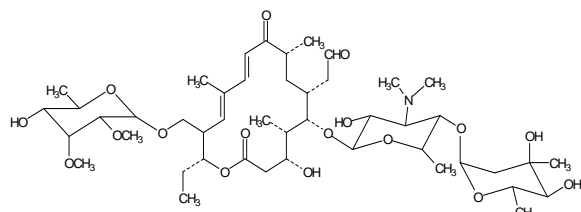
Tylosin A	100%
Tylosin B	36%
Chloramphenicol	0%
Fluoroquinolones	0%
Leucomalachite green	0%
Tetracyclines	0%

Conjugate:

Tylosin-HRP stabilized

Standard range (ready-to-use):

0, 0.625, 1.25, 2.5, 5, 10 and 20 ng/ml



Chemical structure of tylosin A

Assay characteristics

Matrices

Milk
Honey
Egg
Feed
Tissue
Serum
Urine

LOD (ppb)

2.5
2.5
2.5
2.5
2.5
2.5
2.5

The Limit of detection (LOD) is calculated as: $X_n + 3SD$ and is determined under optimal conditions.

Sample preparation

For milk, honey, egg, feed, tissue, serum and urine fast and efficient methods are included in the kit manual.

Procedure

Antibody, conjugate and standard/sample are pipetted into the wells and incubated for one hour at 20°C - 25°C. After a washing procedure ready-to-use substrate is added and incubated for 15 minutes at 20°C - 25°C. The reaction is stopped and the absorbance is read in a spectrophotometer at 450 nm.

EuroProxima's user-friendly software converts the measured optical density into the concentration of the metabolite in the starting material.