



T-2/HT2 TOXIN ELISA (5121THT)

General

T-2 and HT-2 Toxin belong to the group of trichothecenes, a large group of mycotoxins produced mainly by *Fusarium* species. Both T-2 and HT-2 toxins can be found in crops such as corn, wheat, barley and oats and also in products thereof. These toxins are harmful to both humans and animals. The Panel on Contaminants in the Food Chain (CONTAM Panel) of the European Food Safety Authority has set the tolerable daily intake for the sum of both T-2 and HT-2 toxins at 100 ng/kg body weight

The **T-2/HT2 Toxin ELISA** is a competitive enzyme immunoassay based on monoclonal antibodies directed against protein conjugated T-2 toxin.

Kit characteristics

Microtiter plate:

96 wells
12 x 8 Breakapart

Antibody cross-reactivity:

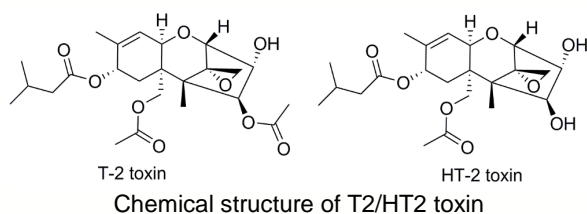
T-2 Toxin	100%
HT-2 Toxin	125%

Conjugate:

T-2 toxin-HRP

Standard range:

0, 0.125, 0.25, 0.5, 1, 2 and 4 ng/ml



Assay characteristics

Matrices

Cereals
Baby food

LOD (ppb)

12 ppb
6 ppb

The Limit of detection (LOD) is calculated as: $X_n + 3SD$ and is determined under optimal conditions.

Sample preparation

For cereals and silage fast and efficient methods are included in the kit manual.

Procedure

Antibody, conjugate and standard/sample are pipetted into the wells and incubated for one hour at 37°C. After a washing procedure ready-to-use substrate is added and incubated for 30 minutes at 20°C - 25°C. The reaction is stopped and the absorbance is read in a spectrophotometer at 450 nm.

EuroProxima's user-friendly software converts the measured optical density into the concentration of the metabolite in the starting material.