



EuroProxima
Close to your analysis

OCHRATOXIN A ELISA (5121OCH)

General

Ochratoxin-A is a nephrotoxic and nephrocarcinogenic mycotoxin produced by *Penicillium moulds* in temperate and cold climates and by a number of *Aspergillus* species in warmer and tropical areas of the world.

For Ochratoxin-A maximum levels (MLs) are established legally in Europe. Depending on the fact whether products are used directly for human consumption or the products still have to be processed. The MLs vary from 3 to 10 µg/kg.

The **Ochratoxin A ELISA** is a competitive enzyme immunoassay based on antibodies directed against ochratoxin A.

Kit characteristics

Microtiter plate:

96 wells
12 x 8 Breakapart

Antibody cross-reactivity:

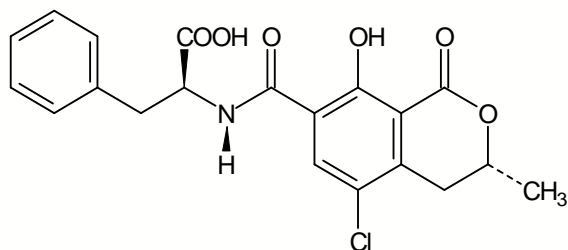
Ochratoxin A	100%
Ochratoxin B	9.3%
Other mycotoxins	<0.1%

Conjugate:

Ochratoxin-HRP stabilized

Standard range:

Stock standard 10 ng/ml, lyophilized



Chemical structure of ochratoxin A

Assay characteristics

Matrices

Wine	0.25
Cereals	1.0
Cocoa	1.0
Green coffee	1.0

LOD (ppb)

The Limit of detection (LOD) is calculated as: $X_n + 3SD$ and is determined under optimal conditions.

Sample preparation

For wine, cereals, cocoa and green coffee fast and efficient methods are included in the kit manual.

Procedure

Antibody, conjugate and standard/sample are pipetted into the wells and incubated for one hour at 37°C. After a washing procedure ready-to-use substrate is added and incubated for 30 minutes at 20°C - 25°C. The reaction is stopped and the absorbance is read in a spectrophotometer at 450 nm.

EuroProxima's user-friendly software converts the measured optical density into the concentration of the metabolite in the starting material.