



EuroProxima
Close to your analysis

LINCOMYCIN ELISA (5151LIN)

General

Lincomycin is a narrow spectrum antibiotic derived from *Streptomyces lincolnensis*. It belongs to the lincosamide group which also includes pirlimycin and clindamycin.

The EU has set maximum residue limits (MRLs) for lincomycin in different foods of animal origin: 50 µg/kg for fat/eggs, 100 µg/kg for muscle, 150 µg/kg for milk, 500 µg/kg for liver and 1500 µg/kg for kidney. Although in the EU no MRLs have been established for antibiotics in honey, some countries including Belgium, Hungary, Switzerland and the United Kingdom have set Action Limits for lincomycin, which vary from 10 to 50 µg/kg.

The **Lincomycin ELISA** is a competitive enzyme immunoassay based on specific antibodies directed against lincomycin.

Kit characteristics

Microtiter plate:

96 Wells
12 x 8 Breakapart

Antibody cross-reactivity:

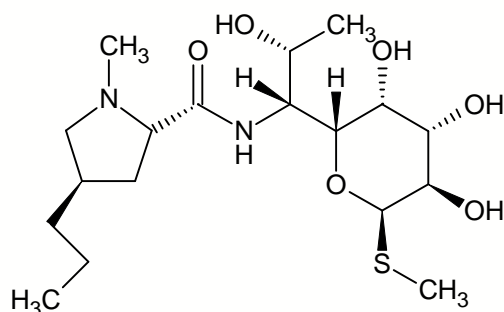
Lincomycin 100%
Clindamycin <0.1%

Conjugate:

Lincomycin-HRP stabilized

Standard range (ready to use):

0.0625, 0.125, 0.25, 0.5, 1.0 and 2.0 ng/ml



Chemical structure of lincomycin

Assay characteristics

Matrices	LOD (ppb)
Milk	45
Tissue	41
Liver	100
Honey	7
Egg	20

The Limit of detection (LOD) is calculated as: $X_n + 3SD$ and is determined under optimal conditions.

Sample preparation

For milk, tissue, liver, honey and egg fast and efficient extraction methods are included in the kit manual.

Procedure

Antibody, conjugate and standard/sample are pipetted into the wells and incubated for 1 hour at 20°C to 25°C. After a washing procedure ready-to-use substrate is added and incubated for 30 minutes at 20°C to 25°C. The reaction is stopped and the absorbance is read in a spectrophotometer at 450 nm.

EuroProxima's user-friendly software converts the measured optical density into the concentration of the metabolite in the starting material.