



**EuroProxima**  
Close to your analysis

## CARAZOLOL ELISA (5201CARA)

### General

Carazolol is a nonspecific  $\beta$ -adrenergic blocking agent that is used in pigs to prevent stress during transport. A less widespread use is in the prevention of reproductive stress in dairy cows. In the EU, maximum residue limits (MRLs) have been established for both pigs and cattle. The compound is listed in Annex I of Council Regulation (EEC) No. 2377/90. The marker residue is the parent substance.

The **Carazolol ELISA** is a competitive enzyme immunoassay based on antibodies directed against carazolol.

### Kit characteristics

**Microtiter plate:**

96 wells  
12 x 8 Breakapart

**Antibody cross-reactivity:**

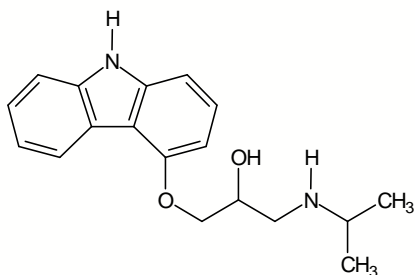
Carazolol	100%
Clenbuterol	<0.02%
Salbutamol	<0.02%
Adrenaline	<0.02%
Epinephrine	<0.02%
Alprenolone	<0.02%

**Conjugate:**

Carazolol-HRP stabilized

**Standard range (ready-to-use):**

0.078, 0.156, 0.313, 0.625, 1.25 and 2.5 ng/ml



Chemical structure of carazolol

### Assay characteristics

<b>Samples</b>	<b>LOD (ppb)</b>
Urine	2.2
Tissue	0.3
Liver/kidney	3.0

The Limit of detection (LOD) is calculated as:  $X_n + 3SD$  and is determined under optimal conditions.

**Sample preparation**

For urine, tissue, liver/kidney fast and efficient methods are included in the kit manual.

**Procedure**

Antibody, conjugate and sample/standard are pipetted into the wells and incubated for one hour at 20°C - 25°C. After a washing procedure ready-to-use substrate is added and incubated for 30 minutes at 20°C - 25°C.

The reaction is stopped and the absorbance is read in a spectrophotometer at 450 nm.

EuroProxima's user-friendly software converts the measured optical density into the concentration of the metabolite in the starting material.